



# 888 DEL MONTE BLVD

PACIFIC GROVE, CALIFORNIA

**PACIFIC GROVE  
LEGACY ESTATE**

\$7,495,000

[PacificGroveEstate.com](http://PacificGroveEstate.com)



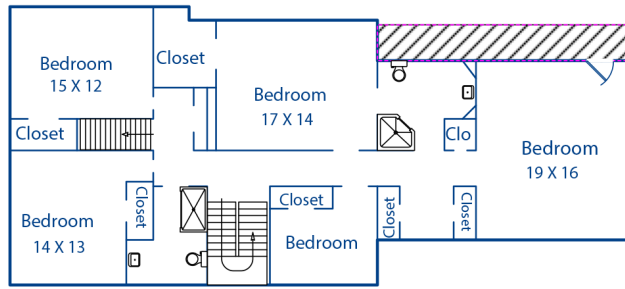
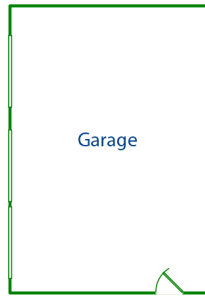
Perched above one of California’s most breathtaking stretches of coastline, this extraordinary legacy estate offers sweeping, unobstructed views of the Pacific Ocean, Monterey Bay, and iconic Lovers Point. Originally built in the 1940s, this stately residence blends Colonial and Monterey Revival styles, an ode to California’s early architectural heritage. Set across an exceptionally rare four-parcel assemblage totaling nearly half an acre, the property offers an uncommon sense of privacy, scale, and prestige rarely found in Pacific Grove. Lush gardens, tranquil fountains, intimate seating areas, and dramatic natural rock outcroppings create a truly private coastal sanctuary. Inside, luxurious hardwood floors, soaring ceilings, and exceptional craftsmanship establish an atmosphere of refinement, while expansive windows frame breathtaking ocean vistas from nearly every room. The 7-bedroom estate includes a beautifully remodeled separate guest suite, a spacious three-car garage, and a stunning primary suite with panoramic views and a private balcony perfectly positioned for sunrise. Just moments from the dazzling coastline and vibrant downtown boutiques and restaurants, this remarkable estate represents a rare opportunity to steward one of the region’s premier coastal properties.



831.214.1990 | DRE#00891159  
[TimAllenProperties.com](http://TimAllenProperties.com)  
[Team@TimAllenProperties.com](mailto:Team@TimAllenProperties.com)

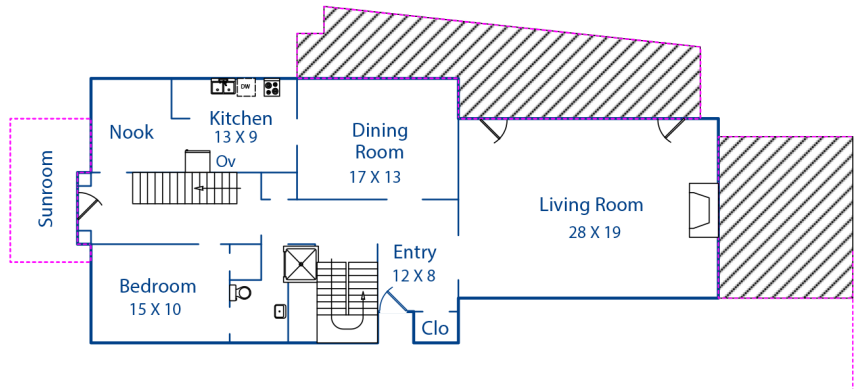
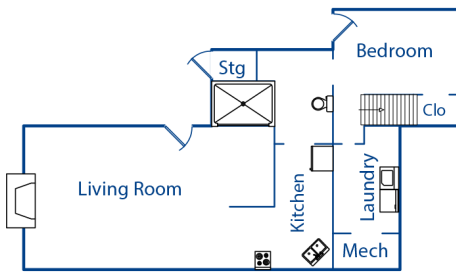


# FLOOR PLAN



Upper Level

Finished Basement/ADU



Main Living Area - 1787sf

Upper Level - 1800sf

---

Total - 3587sf

Sunroom - 114sf

Finished Basement/Separate Guest Suite - 968sf

Garage - 704sf

This model is for use as a visual tool only. Some measurements are estimates. Therefore, no appraisal value should be inferred.

## SPECIFICS



7 Bedrooms



4 Bathrooms



4,555 SqFt



.41 Acre Lot

Interior: ..... Drywall

Exterior: ..... Stucco, Wood, Carmel Stone

Fireplace: ..... 1 - Gas Starter

Heat: ..... Forced Air

Roof: ..... Presidential Composition

Floors: ..... Hardwood and Tile

Garage: ..... 3-Car Detached

Year Remodeled: ..... 1941

**2% Buyers Brokerage Compensation** | Brokerage Compensation not binding unless confirmed by separate agreement among applicable parties.